



Table of Contents

2013 Enhancements	3
Installation & Configuration	3
Inspection Specification	3
Inspection Records	6
NC	7
CPA	7
Training	8
Tickets	8
Reporting	8
Doc Control	8
Options	8
Miscellaneous	8
2013.0.1 Enhancements	9
Doc Control	9
Inspection	9
Managed Files	9
Request	9
Attachments	9
2013.1.0 Enhancements	10
Inspections	10
Doc Control	10
Reporting	10
Miscellaneous	10
2013.1.1 Enhancements	11
Inspection	11
Miscellaneous	11
2013.1.3 Enhancements	11
Employee	11
Options	11
<i>uniPoint Upgrade Readme Version 2013.1.4 Dated 2013-06-28</i>	1

Miscellaneous	11
2013.1.4 Enhancements	11
Install	11
Bug fixes from 2012.4.4 to 2013.0.0	12
Inspection	12
Supplier Management	12
Key Indicators	12
Reporting	12
Doc Control	12
Miscellaneous	12
Bug Fixes from 2013.0.0 to 2013.0.1	13
Inspection	13
Attachments	13
Key Indicators	13
Meetings	13
Bug Fixes from 2013.0.1 to 2013.1.0	14
Inspection	14
Doc Control	14
Training	14
Requests	14
Reporting	14
Miscellaneous	14
Bug Fixes from 2013.1.0 to 2013.1.1	15
Inspection	15
Miscellaneous	15
Bug Fixes from 2013.1.1 to 2013.1.2	15
Miscellaneous	15
Bug Fixes from 2013.1.2 to 2013.1.3	16
Miscellaneous	16
Tool & Equip	16
Inspection	16
Bug Fixes from 2013.1.3 to 2013.1.4	16
Miscellaneous	16
Suggestions	17
SQL Server	17
Backups	17

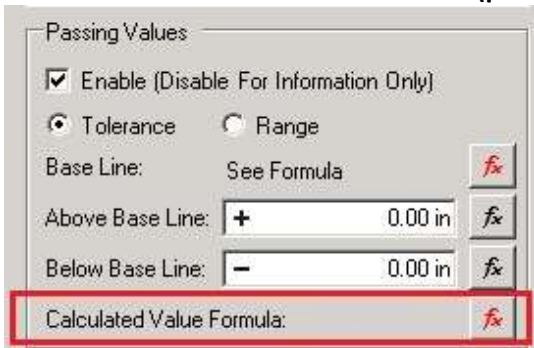
2013 Enhancements

Installation & Configuration

- uniPoint is now compatible with Windows 8, Windows Server 2012, SQL Server 2012, and Microsoft Office 2013 32-bit.
- .Net framework has been updated to 4.0 and is installed automatically with uniPoint, increasing the minimum required space for installation to 1.5GB.

Inspection Specification

- Numeric type attributes now support a “Calculated Value Formula” which auto-calculates a measurement result based on attributes or functions. **(pictured)**



- Calculated attributes will be designated in an inspection record by use of the fx symbol **(pictured)**. Clicking the fx symbol will display the calculation for that attribute.

R	C	Attribute	S	Value	D
	<input checked="" type="checkbox"/>	length		5.00 in	
	<input checked="" type="checkbox"/>	width		2.00 in	
	<input checked="" type="checkbox"/>	height		10.00 in	
	<input checked="" type="checkbox"/>	area	fx	10.00 in	
	<input checked="" type="checkbox"/>	volume	fx	100.00 in	

- Serial and Lot have been added as standard attributes that can be checked on/off on the General tab on an Inspection Specification (**Fig. 1**). They are off by default, but when turned on, they will appear automatically for any Inspection Record Measurements created from that Specification.
 - Serial and Lot information can then be seen in the item grid by right-clicking the column headers and dragging them in from the Field Chooser. (**Fig. 2**)
 - Note: If version 2013.0.0 has been installed as an upgrade, “Reset Grid” must be selected before “Field Chooser” will function.**
 - At that point, right-clicking anywhere in the item grid will give you the option of toggling the filter row which you can then use to search for specific item information.

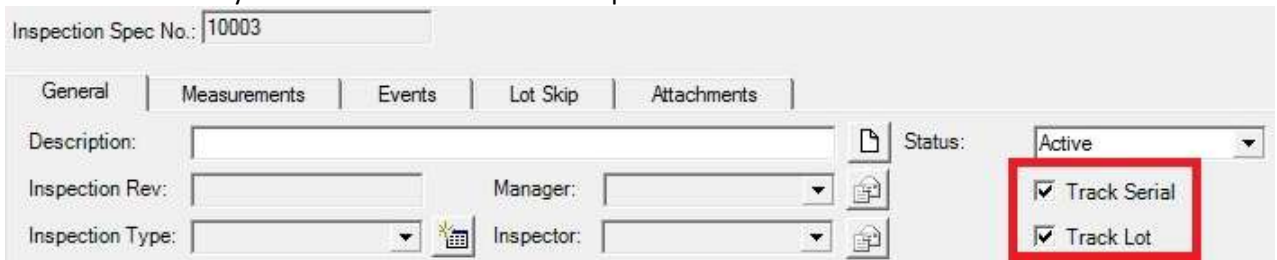


Fig. 1

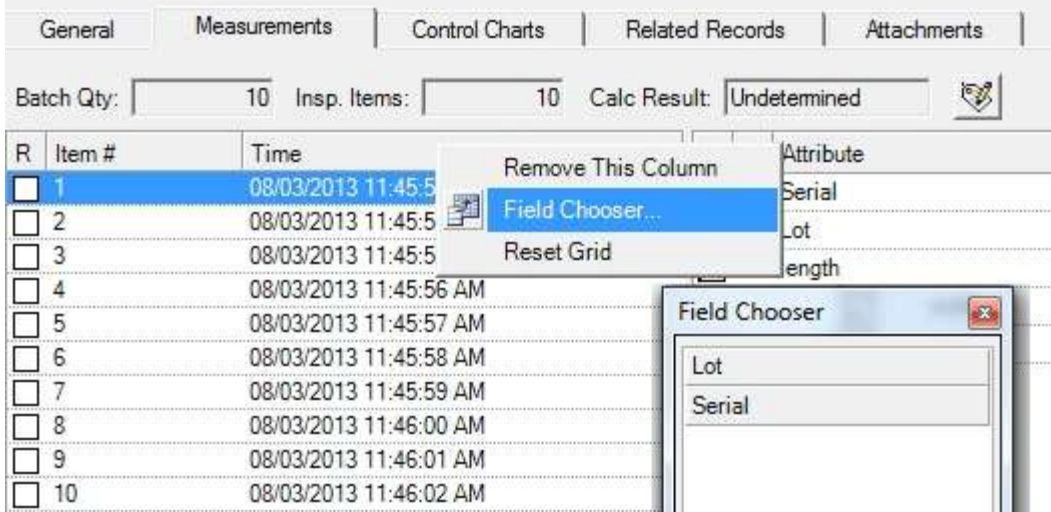
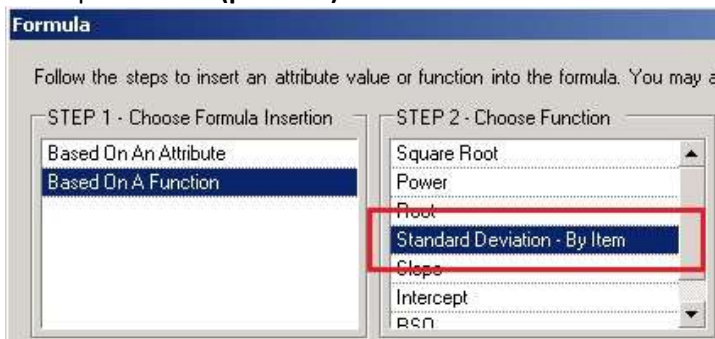


Fig. 2

- Formulas now support Standard Deviation, Slope, Intercept, and RSQ functions, as well as the new Spec Lookup attribute. (**pictured**)



- Alphanumeric type attributes now default to a length of 15.
- A new attribute type “Spec Lookup” has been added. This type adds the value from the most recent measurement of the most recent record from the selected specification’s attribute (**fig. 1**). This value is static, but can be updated to more recent data through the Details window accessed by clicking the information icon. (**fig. 2**)

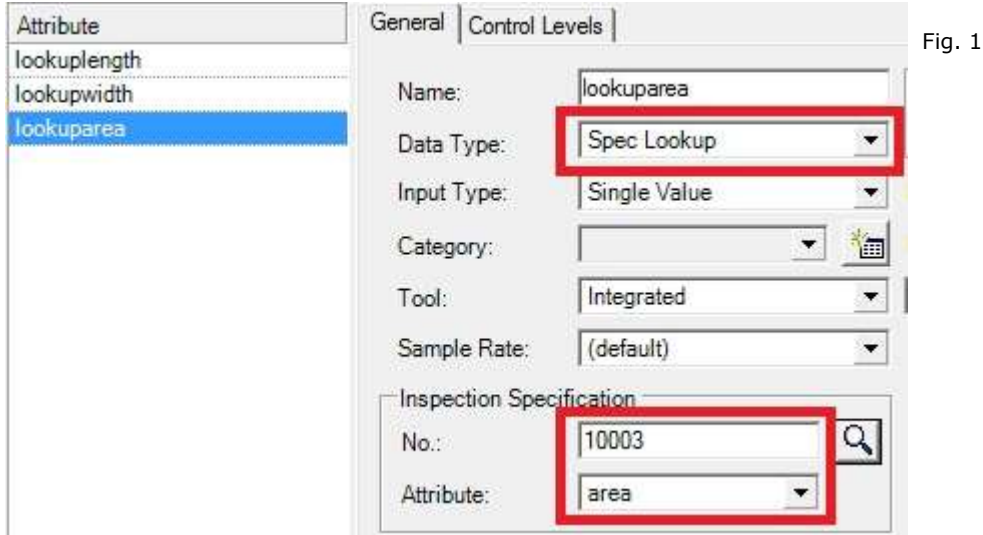
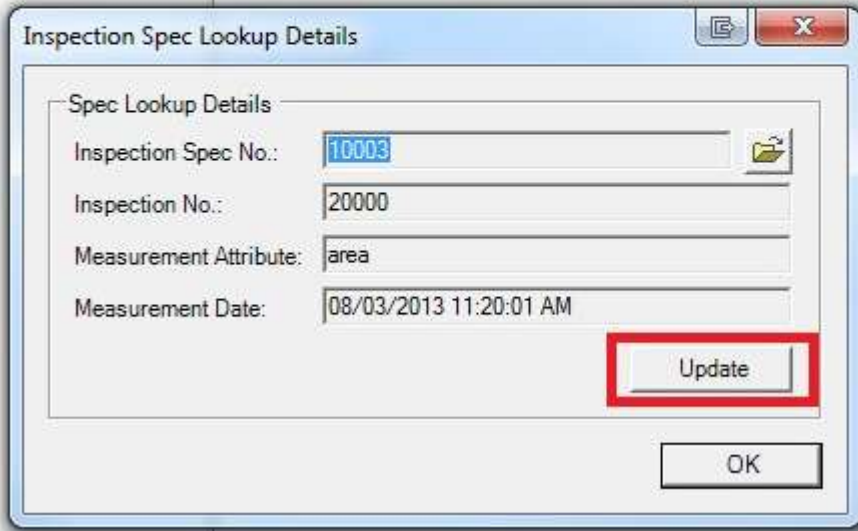


Fig. 2

R	C	Attribute	S	Value
13	11:21:41 AM	lookuplength		0.00
13	11:21:42 AM	lookupwidth		2.25
13	11:21:44 AM	lookuparea		22.50

Red boxes highlight the 'S' column and the 'lookuparea' row in the table.

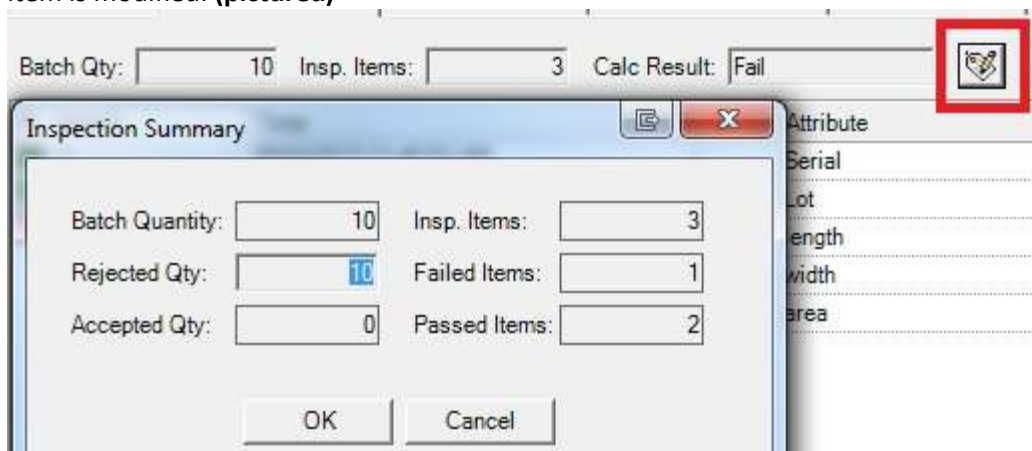


Inspection Records

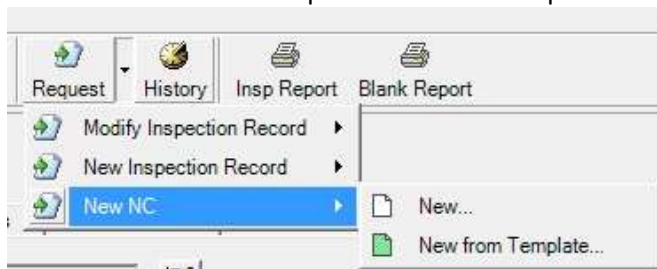
- Multiple inspection items can now be added quickly in groups by selecting the “Add Items” option from the “New” dropdown. By default, the amount of items to add will be the number in the “Insp. Items” field. **(pictured)**



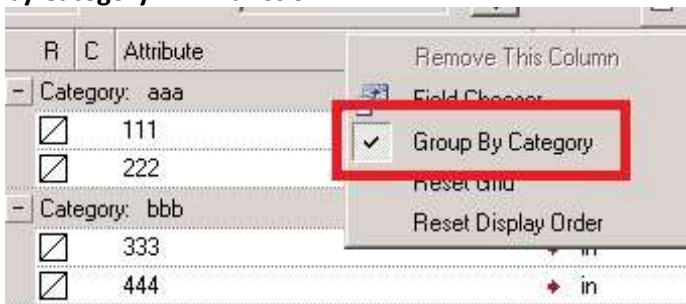
- An Inspection Summary window can now be viewed by clicking the icon next to the Calc Result field. This window concisely displays the current inspection result information – updated each time an inspection item is modified. **(pictured)**



- A new NC can now be requested from the Inspection Records module **(pictured)**

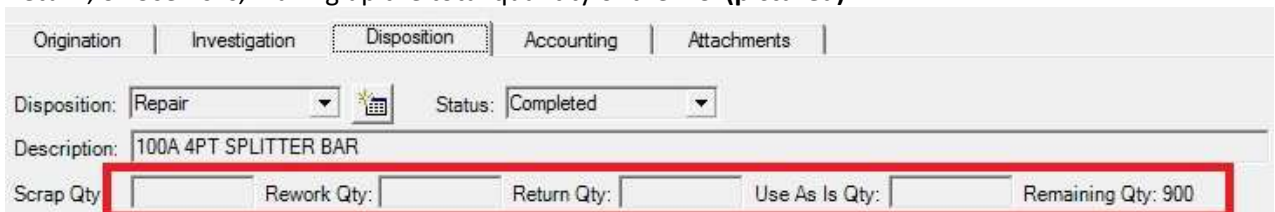


- The Create NC option “All Inspected Items” has been relabeled “Entire Batch” to more properly describe its function.
- The Inspection Specification Lookup dialog has been upgraded
 - Focus is given to the Material field by default
 - “Enter” now updates the lookup window
 - If only one record would be returned, it is selected and a record is created for that specification automatically
 - If a Job is selected, Material is automatically filled from that Job and a new search is performed
- Category has been added as a new field to the General group of the Inspection Specification Measurements tab. This can used to group attributes in an Inspection Record **(pictured)**
- **Note: If version 2013.0.0 has been installed as an upgrade, “Reset Grid” must be selected before “Group by Category” will function.**



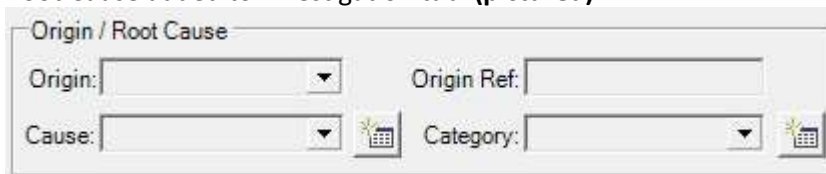
NC

- Job filter is now visible when NC Type is “(all)” in NC Search.
- The Disposition tab now allows a quantity of product to be defined as any combination of Scrap, Rework, Return, or Use As Is, making up the total quantity of the NC. **(pictured)**



CPA

- Search filter now includes Department.
- Root Cause added to Investigation tab. **(pictured)**



- “Origin” renamed to “Source” on Origination tab.
- “CPA Analysis” report has been renamed “CPA Analysis – Type”
- New “CPA Analysis – Origin” report has been added

Training

- Date dialogs on Trainees tab are no longer required.
- When changing multiple dates on the Trainees tab, you can now set a blank date to clear each date field.

Tickets

- In the search grid, Repair tickets now display the completed date in the “Next/Comp” column.
- Tickets created for a Template Equip will automatically be set as a template by default.

Reporting

- Crystal Reports upgraded to version 13.
- NC reports now include additional quantities from the Disposition tab of the NC module.
 - “NC Report” includes disposition quantities.
 - “Scrap Report” includes scrap quantity.
- New “NC Disposition Qty” report added.

Doc Control

- Name field size has been increased from 75 to 100 characters.
- Managed Files are now validating against the file path, ensuring that no document or attachment path is the same.

Options

- Options – All screens have been re-designed.
- Options – “Restrict to Template” and “Restrict to Autonumber” options have been added for each module.
 - Security – A “New Template” security setting needs to be checked for each module where “Restrict to Template” is used.

Miscellaneous

- Company – Increased the “Name” field on the “Address” tab from 30 to 40 characters.
- ToDo – User dropdown now displays in the standard two-column (User ID / Name) format.
- All Modules – A “New Template” command has been added in the “New” button dropdown.
- The “Inspection Report” will now include all quantities.

2013.0.1 Enhancements

Doc Control

- Ability to multi-select sign-offs and distribution records to set the due date.
- New option to only create distribution Todos when the document status changes to Active. **(pictured)**
 Doc Distribution Acknowledgement ToDo's
 Only create ToDo's when Document Status is 'Active'
- When 1 or more sign-offs are rejected for a Pending or Active document a ToDo will be created for the manager.

Inspection

- On import, formula attributes now recalculate.
- Pressing the “I” icon for spec lookup attributes now displays the lot and serial.

Managed Files

- Option headers now say “Managed” instead of “Organized”.

Request

- New option to create ToDo for deferred Requests (off by default).
 Create ToDo Items when Status is Deferred

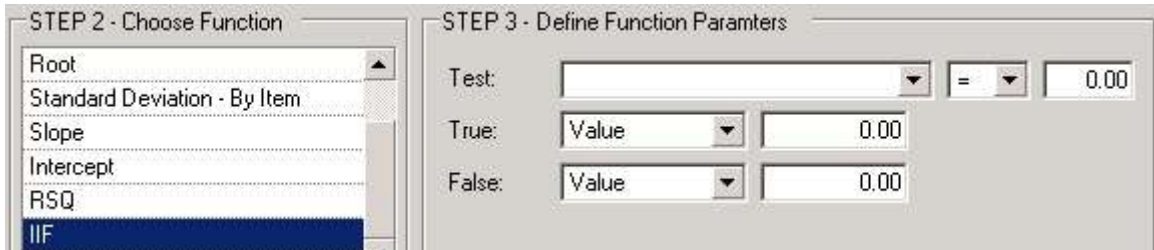
Attachments

- Ability to multi-select internal and external attachments.
- Ability to multi-select and change from one user defined type to another.

2013.1.0 Enhancements

Inspections

- Close Date will be automatically populated when closed.
- Formulas – “Insert” button no longer resets the steps.
- Formulas – Double-clicking on an attribute will insert it into the formula.
- Formulas – IIF added as a formula function. **(pictured)**



- When entering measurements, the “Enter” key will skip spec lookups, formulas, and locked items.

Doc Control

- Email button added beside doc path. **(pictured)**



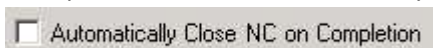
- Double clicking doc path will open the document.
- .dot and .dotx support added to Doc Control file search.
- When using managed files, history will include the original document file name.

Reporting

- Ticket Report – Costs and Ticket Details sections are hidden if there are no costs or details.
- Equip Maint Schedule – Will now filter Equip based on the Equip Status filter.
- Equip Maint Schedule – Will now show “In Progress” on “Active M&R Sched”.
- Time History Report – Tickets are now in the Module drop down.
- CPA Report – “Notes” labels changed to match the CPA module.
- Trainee List Report – Now has an “Employee Status” filter.

Miscellaneous

- Attachments – Ability to multi-select and email file attachments has been added.
- Attachments – The description for files now defaults to the file name instead of the full path.
- Database Admin and Database Upgrade – Unique databases for uniPoint and integrations are now required for all installations. Special consideration is being made for integrations with parameters.
- “Division” has been added to the “Origination” tabs for Audit, CPA, Customer Service, Incident, and NC.
- NC Options added – “Automatically Close NC on Completion”. **(pictured)**



- “uniPoint” added as Address Book provider to SMTP Server Options.
- ToDo User dropdown now only shows active users.
- UMC – SQL Server 2012 support added to SqlServer DB Maintenance, as well as detection of SQL Server 2008 R2.

2013.1.1 Enhancements

Inspection

- Added the ability to mix multiple inspection records from a spec into a new inspection record of the same spec. The user will be able to select 2 or more inspection records to be mixed and specify a mixing percentage. By default the mixing percentage will be equal but can be changed by the user.

Miscellaneous

- User Admin – Added Ability to copy permissions from one database to another.

2013.1.3 Enhancements

Employee

- Added security permission to show/hide personal information in the module.

Options

- “Tab Completion Order” option renamed to “ToDo Creation Order” in NC, CPA, Customer Service, Audit, and Health & Safety modules.

Miscellaneous

- Inspection Report – Lot & Serial added as filters to the report.
- When rejecting a Sign-off, the user will be informed if there is no manager set.

2013.1.4 Enhancements

Install

- SQL unidx option added to installer

Bug fixes from 2012.4.4 to 2013.0.0

Inspection

- Formulas will no longer throw errors if resulting in a divide by 0.
- When a specification has more than 1 attribute that is a choice list, moving the choice list items up and down will work as expected.
- Inspection – Lookup field will no longer change to editable when the status is changed to complete.

Supplier Management

- Single quotes in supplier names no longer cause errors.

Key Indicators

- “Past Due Reviews” on obsolete documents will no longer display in Key Indicators.
- Spelling mistakes in CPA key indicators have been addressed.
- “Doc Sign-Offs Escalated” and “Doc Sign-Offs My Past Due” will now include all sign-off type Todos and exclude all distribution Todos.
- Key Indicator panels will no longer display in either the screen or context menu for users without the associated permissions.

Reporting

- “Audit/CPA Association Report” will work regardless of where the attachment is created.
- User dropdowns are now sorted alphabetically on all reports
- “Security Report” now excludes modules not included with your license.
- Custom reports using ODBC data sources are no longer case-sensitive for data source names.

Doc Control

- Sign-offs no longer create ToDo items for template records.
- Date shifting has been fixed to work from templates and for new revisions.

Miscellaneous

- Customer Service – Contact information in upper right corner of Investigation and Resolution tabs will always display current information.
- SMTP address book will no longer throw an exception.
- “Company” filter for Survey distribution customers is now correctly filtered on the values in the “Company” column.
- Advanced Process Control references with long Doc Nums (> 20 chars) can now be added.

Bug Fixes from 2013.0.0 to 2013.0.1

Inspection

- The dialogs that display base line and passing values now display formulas properly.

Attachments

- Clearing the attachment type will no longer throw an exception.

Key Indicators

- Exiting uniPoint with KI open will no longer prompt multiple save dialogs.

Meetings

- Attendees detail section will no longer become “read-only” on save.
- Deleting the last time allocation will no longer throw an exception.

Bug Fixes from 2013.0.1 to 2013.1.0

Inspection

- Attribute lookup dialog will work even after clearing its value.
- Grids will now retain their vertical scroll position when entering values.
- Tool lookups will not throw an exception when specifying an “Actual Tool”.
- Lookup dialogs will work in “Attribute” view.
- Customer Lookup won’t throw an error when there is an apostrophe in the Customer ID.

Doc Control

- Doc Sign-Offs and Generic Sign-Offs will only validate drop downs when their value has changed.

Training

- When the option “Change trainee status to Completed when last sign-off is finished” is enabled, pending training will be created for recurring training.
- Recurring training next date calculation repaired.

Requests

- Repaired date shifting on advanced process control dates when creating a template.
- Request dialog will no longer send duplicate emails.
- When creating a request with notifications enabled, it will now send 1 email whether or not a source or source detail is provided.

Reporting

- Review Summary Report - now includes Employee reviews.
- Employee Listing Report - now displays Full Name for integrations which don’t have a separate First and Last name.
- The “Select All” button has been fixed for: SupplierMgmtReport, CustomerMgmtReport, RatingReport, CertificationReport, and MsdsReport.
- MSDS Report - now included on the report tree.

Miscellaneous

- Advanced Process Control tasks won’t create ToDo's for templates in NC, CPA, Customer Service, Audit, Incident, Ratings, Requests, and Custom Modules.
- Tickets will not be created when Equip status is “Disposed”.
- Sign-Offs will now work regardless of casing of User IDs.
- Supplier and Customer Management status filters now display correctly in stand-alone integrations.
- Ticket – adding actual downtime hours before selecting equipment no longer throws an exception.
- Date filters now working properly in ToDo.
- User Admin – user filters are now ignored when switching to group search.
- Revisions can no longer be edited to an existing revision number (Training, Occupation, and MSDS).

Bug Fixes from 2013.1.0 to 2013.1.1

Inspection

- On inspection record import, added logic to filter out empty rows and rows with only whitespace.
- On inspection record import, changed code to truncate decimals to the correct number of places rather than storing them as scientific notation.
- When completing an inspection, a dialog now prompts if you want to stamp with today's date.

Miscellaneous

- Request - Loading a record of request type "Disabled" will no longer cause advanced process control to throw an exception when adding a task.
- Request – Can no longer create a request from a template of request type "Disabled".
- User Admin – "EVERYONE" group no longer appears in the group membership tab.
- UWC – Knowledgebase now works with secured managed documents.
- Customer Service – "Origin Category based on Cause" option now works as intended.
- Key Indicators – "Completed Ticket" KIs now all work based off complete date.

Bug Fixes from 2013.1.1 to 2013.1.2

Miscellaneous

- Rating Criteria "Value" field now allows up to 20 characters.
- Inspection – Formula STDEV function now works the same as Excel.
- Options – With the "From Template Only" option enabled, the new record dialog no longer shows a required field message.

Bug Fixes from 2013.1.2 to 2013.1.3

Miscellaneous

- Deleting a template no longer displays an error message.
- NC – Auto Close option will no longer auto-close the NC if there are uncompleted tabs.
- Doc Control – Distribution User dropdown now includes groups, and you can send e-mails to groups.
- Sign-Off grid columns are now resizable (applies to Doc Control, Inspection Spec/Records, KB Mgr, Ratings, Validation)
- When a Sign-Off is rejected and there is no manager set, a ToDo is no longer created.
- ToDo – No longer displays an error when you have a large number (greater than 2,000) of document approvals or distributions.
- Survey – Multiple Choice Matrix questions will now properly calculate the Max Score.
- Reports – Will now print to the selected printer, rather than the default printer.
- UWC – Document level security now works as expected.

Tool & Equip

- Equip Maintenance Schedule Report – No longer displays an error for MS SQL databases.
- Can no longer delete a record, or modify a toolbox that is checked out.
- Usage – Using the Work Center filter will no longer display an error message.
- Tickets – You can no longer clear the Complete Date for a completed ticket.

Inspection

- Specs – GD&T dialog includes “.003” as one of the choices in the dropdown.
- Specs – Exporting attributes now exports in the same order as they appear in the module.
- A Date attribute that is *not* defaulting to the current date/time will not display an error when entering a measurement.
- Inspection Report – You can now show the GD&T field in the blank report.
- Inspection Report – Displays “**” for failed inspection item values.
- Inspection Report – Running a blank report no longer displays an error.

Bug Fixes from 2013.1.3 to 2013.1.4

Miscellaneous

- Inspection Records search screen lot filter now allows up to 25 characters
- Exponentially increased load speed of ToDo window when loading many items
- Template “quick list” now ordered alphabetically
- Reporting – Custom reports lacking a filter now work properly when they have selection formulas

Suggestions

SQL Server

Are you using Access? Would you rather be using SQL?

uniPoint supports the use of Microsoft (MS) SQL Databases.

I don't have SQL and am not interested in paying for the full version.

Great! You can use MS SQL Express. It is free and legal.

What versions of SQL does uniPoint support?

We support MS SQL 2000 - 2012.

Why should I take the time to convert from Access to SQL?

- 1) We have found through our testing and feedback from the customer's, the read/write speeds are faster on SQL.
- 2) Much easier to back up. You can back up in SQL or you can back up the .mdf and .ldf files. This allows for redundant backup (never a bad thing).
- 3) The chance of data corrupt is significantly reduced in SQL.
- 4) uniPoint is happy to assist active support clients through the upgrade process at no additional charge.

Backups

Backing up critical uniPoint files.

In the event of data loss, you want to make sure that you are backing up all critical data uniPoint files. Here is how to find them so your IT Group can make sure they are being backed up.

If you are using Access:

- 1) unidx file - C:\Program Files or Program Files (x86)\uniPoint\client\unidx.mdb***
- 2) Data file - C:\Program Files or Program Files (x86)\uniPoint\database\pt_data.mdb***
- 3) If you are using managed Doc Control/Attachments you can find out where these are stored by logging into the UAC (client) -> System Administration -> Options -> Doc Control -> Document Organization. For Attachments, it will be UAC (client) -> System Administration -> Options -> Attachments -> Attachment Organization. You may need your uniPoint System Administrators help to do this.***

If you are using SQL:

- 1) Go to the SQL Server Management Studio on the SQL Server. Log into the correct Instance and you should see two files - uniPoint_unidx and uniPoint_Live. If you don't want to backup in SQL you can make sure that the .mdf and .ldf are copied to your storage device.***
- 2) If you are using managed Doc Control/Attachments you can find out where these are stored by logging into the UAC (client) -> System Administration -> Options -> Doc Control -> Document Organization. For Attachments, it will be UAC (client) -> System Administration -> Options -> Attachments -> Attachment Organization.***

***These are the default locations. You may have the files stored on a separate drive/folder. If you would like help finding the critical uniPoint files, give support a call and we can connect up with you and find them. 204-480-0539 Option 1.